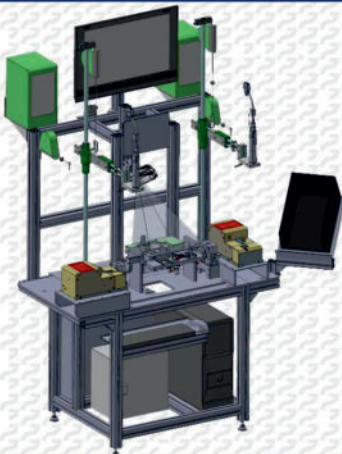


## SPECIAL MACHINES:



### ✓ DESIGN:

mechanical design, strong and weak current electrical design, PLC control of the machines.

### ✓ CONSTRUCTION:

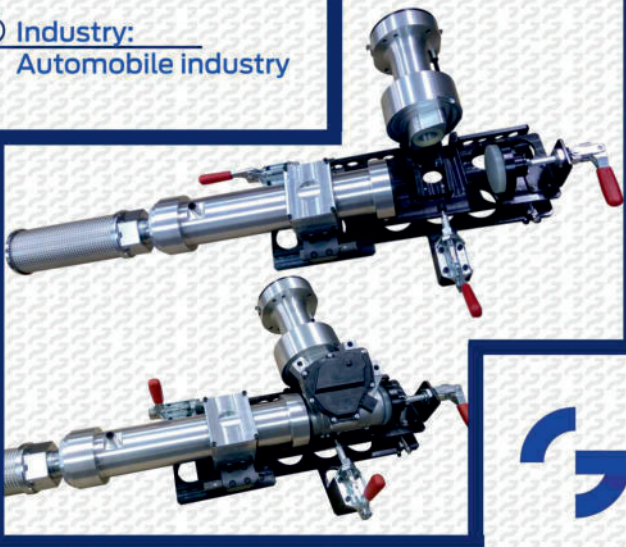
the mechanical, strong and weak current electrical construction of the machine, making the PLC control of the machine. Installation of the equipment, training of the end users.

We supply our machines with CE conformity statement.

## AUTOMOTIVE AND LIGHTING INDUSTRY:

### Egr valve clamp system for flow test.

✓ Industry:  
Automobile industry



### Bearing dosing and pressing equipment

✓ Industry: Automobile Industry



### In feed chain track

✓ Industry: Lighting industry



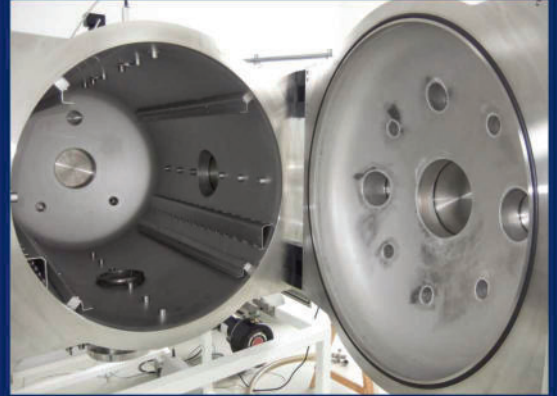
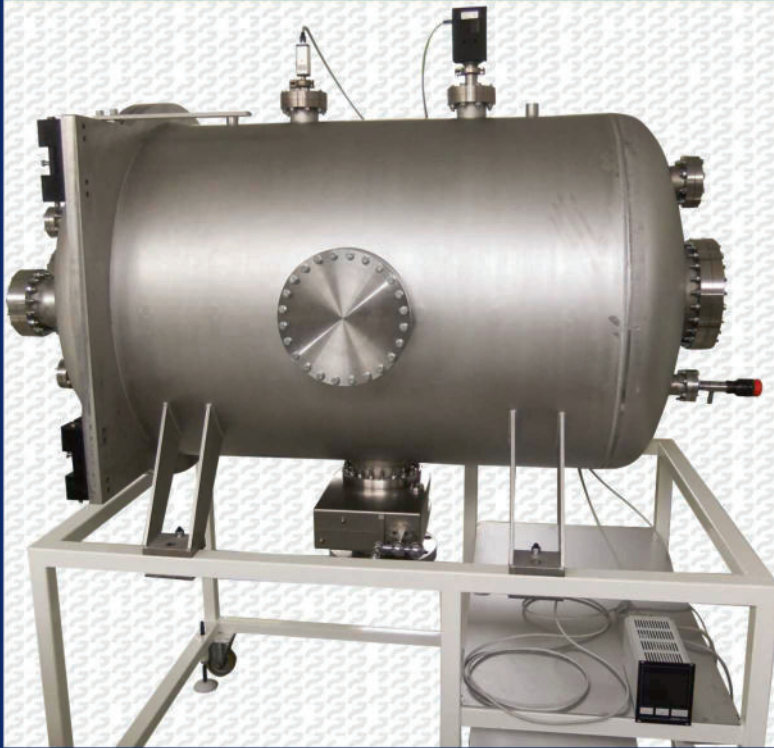


## VACUUM TECHNOLOGY:

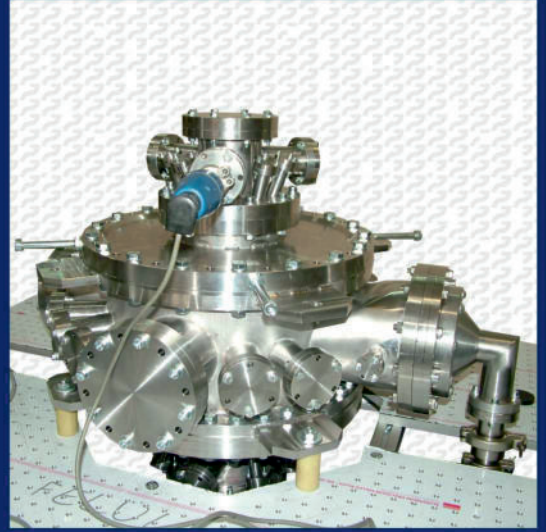
Space simulator, vacuum chamber for bake out test

☑ Design and production of vacuum chambers.

☑ Industry: Space industry



☑ Design and production of vacuum chambers



☑ Repair and renovation of vacuum pumps

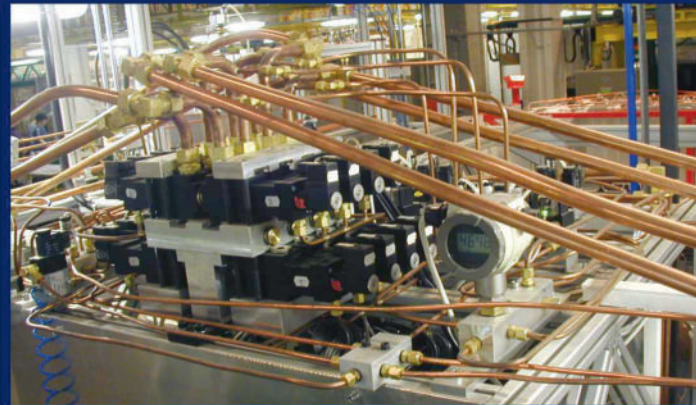


☑ Production of vacuum components



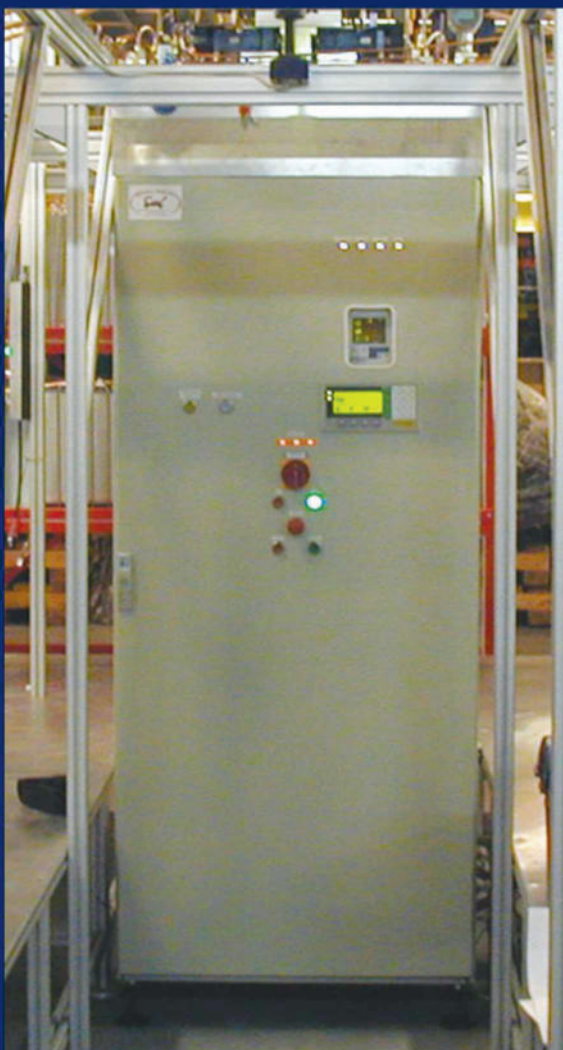


## HELIUM LEAK TEST SPECIAL MACHINES:



### Design and construction of helium leak test special machines

- ✓ The parts produced in mass production are qualified according to the requirements of the customer.
- ✓ The equipment is inserted into the existing machine lines, or a separate stand-alone workstation is created where the quality control test is performed.





## SPECIAL MACHINES DESIGNED AND PRODUCED FOR UNIVERSITIES:



### Centrifugal casting machine

- ✓ Centrifugal casting machine designed and produced for the Faculty of Materials Science and Engineering of University of Miskolc.



### Vacuum chamber

- ✓ Vacuum chamber designed and produced for Eötvös Lóránd University, Faculty of Science Institute of Chemistry, which is a part of a complex laser system.

### CO<sub>2</sub> Supercritical Dryer



- ✓ CO<sub>2</sub> Supercritical Dryer designed and produced for the Department of Physical Chemistry, Institute of Chemistry, Faculty of Science & Technical, University of Debrecen.